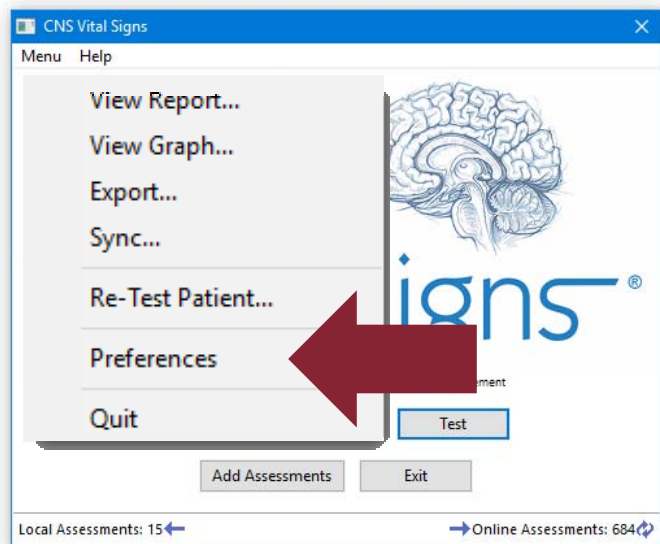


Backing-up VS4 Testing Reports

1



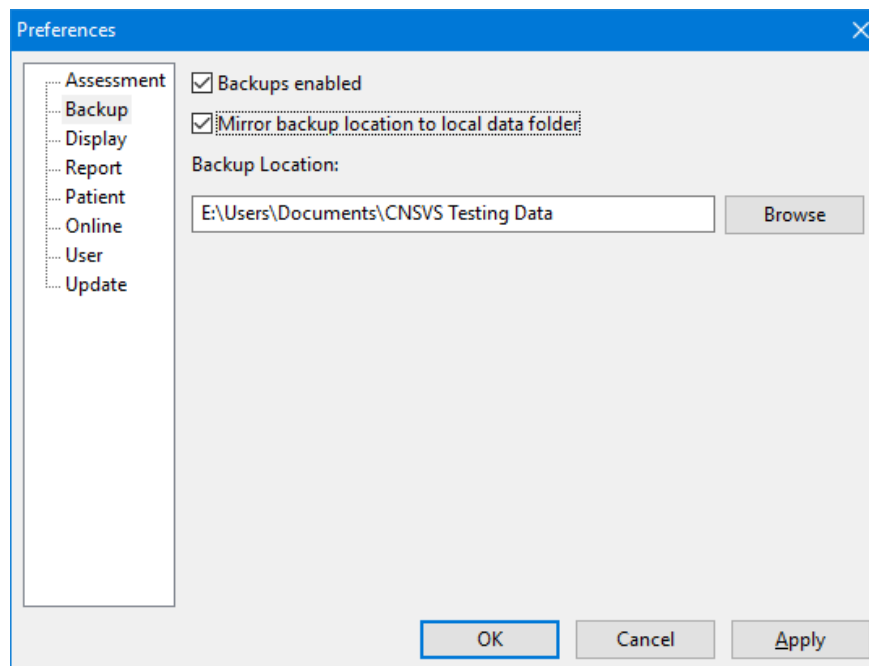
Open the CNS Vital Signs Application... CLICK MENU ...CLICK PREFERENCES

You will need to establish a 'CNSVS Testing Data' folder on a clinic or hospital network server, external drive or cloud service to back-up patient reports.

Multiple testing computers can also have their results mirrored and shared to multiple testing stations.

NOTE: Create a Back-up FILE FOLDER on your Clinic or Hospital Server or data back-up method prior to enabling back-up function.

2



CLICK the BACK-UP tab

- CHECK the 'Backups enabled' box
- MAP the 'Back-up Location' to your established file folder

Multiple testing computers can have patient reports mirrored

- CHECK the 'Mirror backup location to the local data folder' box
- This will enable the mirroring of assessment data from multiple testing stations VS4 Apps to your clinic or hospitals server(s) and/or your local hard drive / cloud service.

Click Apply; Click Ok; Exit CNS Vital Signs

How do I back-up my testing data?